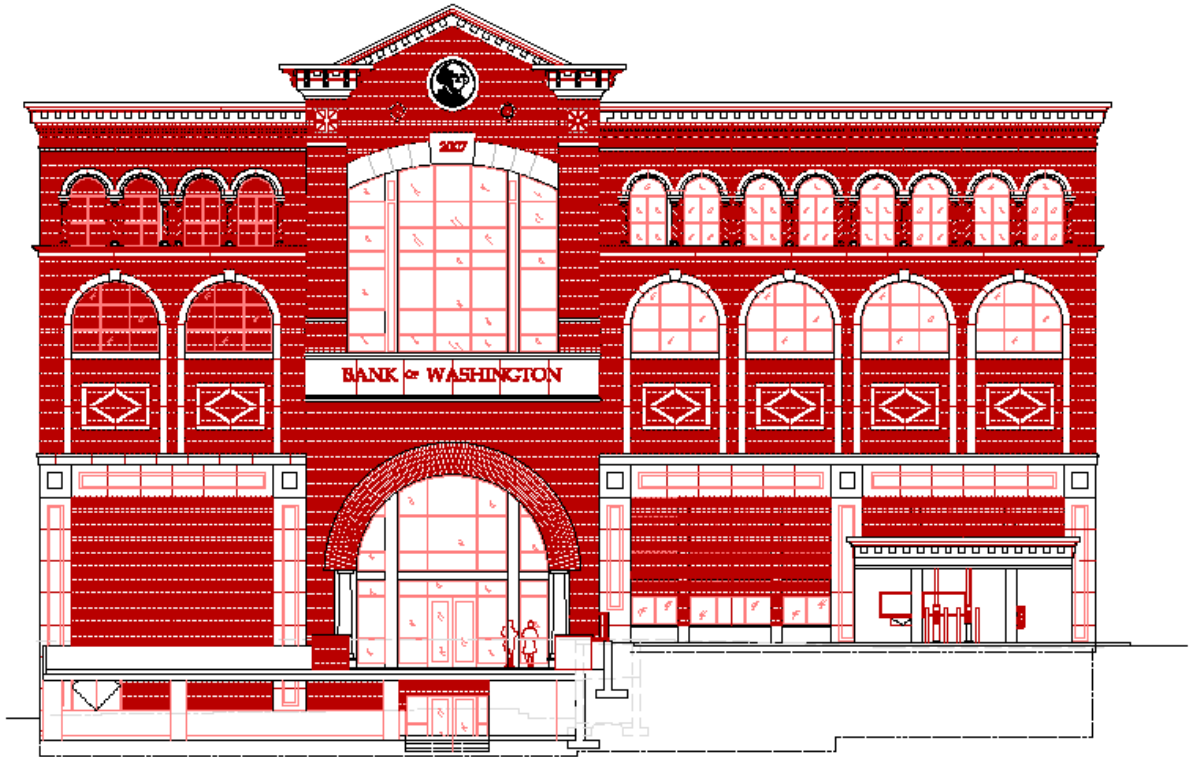




15510 Olive Blvd.  
Suite 207  
St. Louis, MO 63017  
636-536-7004 phone  
636-536-7014 fax



## **BANK OF WASHINGTON**

A UNIQUE SOLUTION FOR A CLIENT WITH AN EXISTING PRESENCE IN THE COMMUNITY. THIS PROJECT COMBINED THREE SEPARATE THREE STORY BUILDINGS AND ADDED THREE ADDITIONAL FLOORS FOR A TOTAL OF 90,000 SQUARE FEET. THE NEW STRUCTURE STRADDLES THE EXISTING THREE BUILDINGS, PROVIDES A NEW MONUMENTAL ENTRANCE AND NEW EXECUTIVE SPACE ON THE UPPER FLOORS. THE KEY TO THE DESIGN WAS AN INNOVATIVE STRUCTURAL SOLUTION AND PHASING TO MAINTAIN THE EXISTING FACILITY'S OPERATION WHILE PREPARING THE NEW SPACE FOR OCCUPANCY. THE EXTERIOR FAÇADE INCORPORATES CURRENT TECHNOLOGY INTO AN HISTORIC SETTING IN ORDER TO BLEND WITH THE SURROUNDING COMMUNITY.